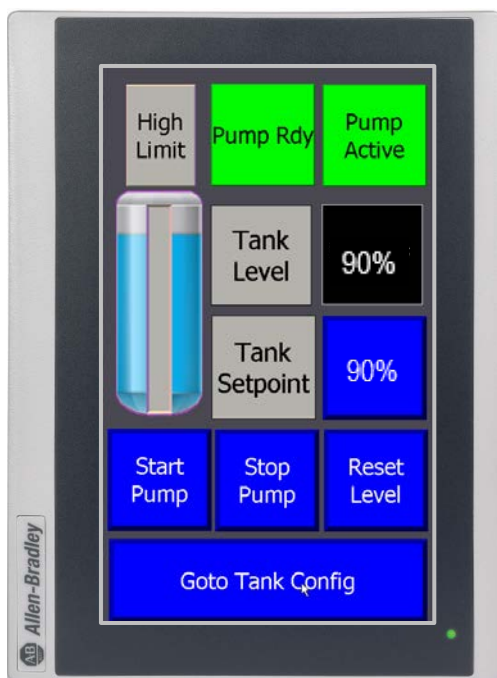


## PanelView 800 Release 10.00 (Terminal Firmware 4.0xx)

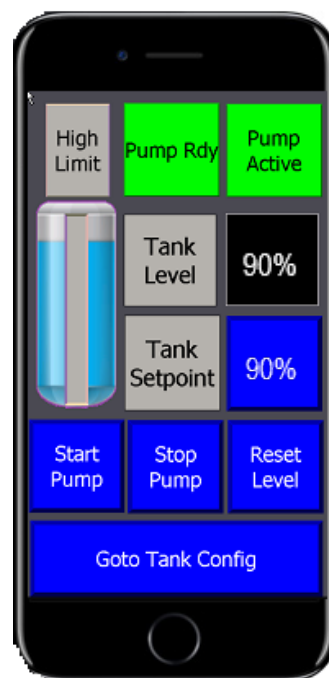
### VNC Overview

Release 10.00 of Connected Component Workbench in conjunction with PanelView 800 terminal firmware 4.011 (or later) now supports remote monitoring via VNC.

- **VNC Server for remote monitoring**  
Operators, supervisors can monitor terminal applications remotely using PC, tablet, mobile phone
  - Password Authentication for Read and Read/Write modes
- Also use it for Troubleshooting, Demos, and so on, and in turn increase your productivity



**PanelView 800 in  
Portrait Mode**



**Mobile Phone as VNC  
Client to PanelView  
800**

### **Additionally this firmware version also supports:**

- Upload applications over EtherNet/IP™
- Support for Micro800 DATE and TIME data types
- Support for pasting tags from Excel into Tag Editor
- Terminal Password Protection
- Modify/Delete Recipe Names from terminal
- Modify Controller Ethernet address from terminal
- Disable/Enable Communication Port from terminal